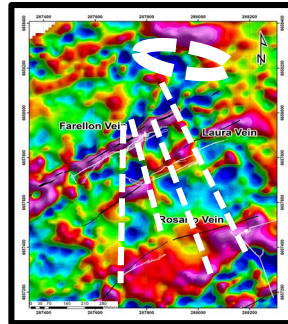


Altiplano Fact Sheet



Key Facts Farellon

- Inferred mineral resource of 278,360 tonnes at an average grade of 1.92% Cu and 0.12 ppm
- Proceeds from sale of vein material extracted during bulk sampling has sustained current operations
- Copper prices are projected to increase during 2019
- Working to expand and upgrade the resource
- Next steps for APN are to make a production decision and consider undertaking a feasibility study



Key facts Laura and Rosario

- The prospectivity of Rosario and Laura veins is similar to the Farellon vein
- Recent underground mapping, sampling, and ground geophysics show significant potential and may warrant underground exploration and development
- Potential to commence initial bulk sample at Rosario
- Potential exists to increase tenement holdings

Altiplano Share Structure

Shares Issued	66.0 M
Fully Diluted	71.2 M
Working Capital (as of November 29, 2018)	\$0.225 M
Market Cap	\$11.89 M
Warrants (average exercise price of \$0.18)	2.14 M
Options (average exercise price of \$0.24)	3.11 M

Key Facts Chile

- Excellent geological potential for High grade, near surface IOCG and high-sulphidation epithermal Au (Au-Cu), and porphyry (Cu-Au) deposits
- Progressive mining jurisdiction
- Small scale mining regime
- Government processing facility
- Local expertise and infrastructure

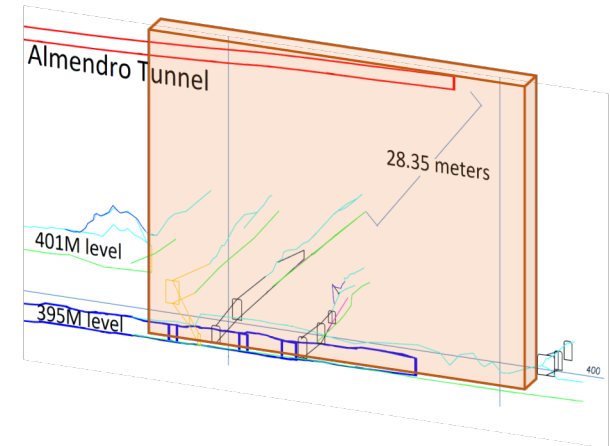
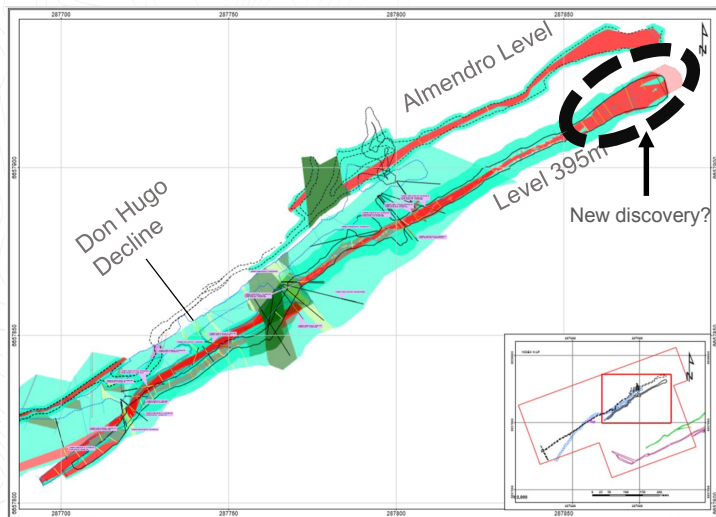


Altiplano Fact Sheet



395M Level Channel Sampling - Dec 2018

- 287m developed along the vein at the 395M level, 217m at the 401M level
- Best grade intervals include 58m long with Cu grades up to 6.38%
- About 40m in 395M level expanded to up to 8m wide, with Cu grades between 1.47% to 2.73%
- Consistent mineralization across all levels, with the chalcopyrite associated mainly with magnetite. There is also the presence of Apatite and Actinolite with low Cu grade CPY disseminated.



395M Level 2019 extraction faces

- 5 parallel chimneys developed at 45° in the widest section of the vein
- Selective sampling method, sampling only through the vein and extracting the half of the impurities per blasting
- Once the chimneys reach 7m below Almendro Tunnel, the extraction of the sections between them will start, providing increased extraction with improved Cu grades
- Currently planning to sample an additional 7 chimneys beginning in February 2019

APNMETALS.COM

TSX.V: APN
OTCQB: ALTPF
WKN: A2JNFG